



ULTIMATE RANGE UPDATE

FOR THE MOST POPULAR LED KITS ON THE MARKET

With recent advancements in LED technology, The Direct Fit LED Bulb Kit range is now seeing one of the biggest updates in years, moving to a smaller and brighter design than ever before.

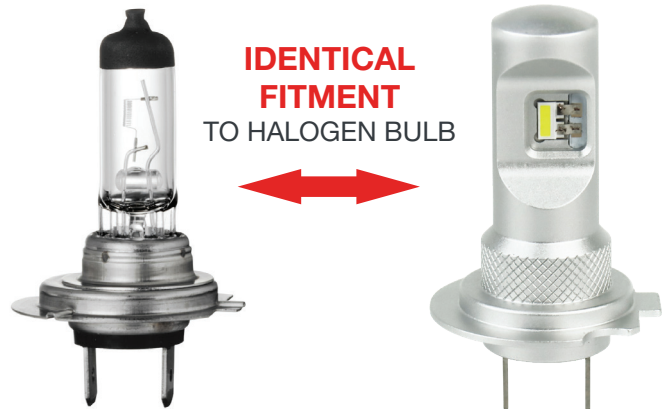
Thanks to an advanced manufacturing process called TST, the LED bulb is now able to run at an incredibly low and stable temperature, meaning beam performance and life expectancy have both improved significantly.

The final update is that there is now a replacement range for OEM Xenon HID bulbs which connect directly to the original cable / ballast unit in the car making upgrading to LED incredibly simple.



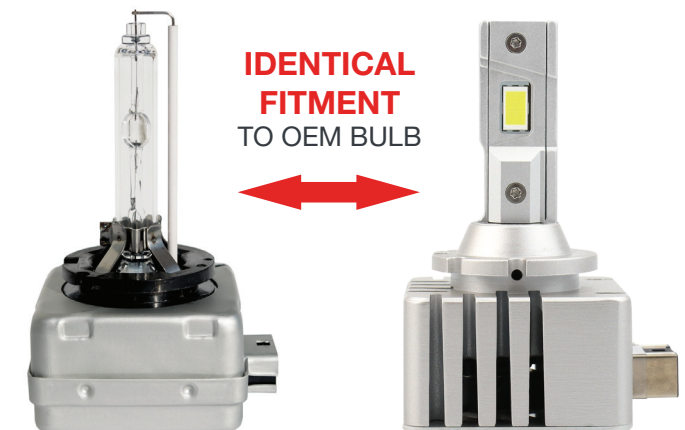
HALOGEN REPLACEMENT 12V - 24V 2000 LUMENS PER BULB

Part No.	Base
999001	H1
999003	H3
999004	H4 / H19
999005	HB3
999006	HB4
999007	H7 / H18
999011	H8 / H9 / H11 / H16
999012	HIR2
999013	H13
999015	H15 - 12V ONLY
999016	HB1 (9004)
999017	HB5 (9007)
999881	H27 (880 / 881)



XENON HID REPLACEMENT 12V - 24V UP TO 4500 LUMENS PER BULB*

Part No.	Base	Lumens Per Bulb*
999000D1	D1S / R	4500
999000D2	D2S / R	4500
999000D3	D3S / R	4500
999000D4	D4S / R	4500
999000D5	D5S / R	3000
999000D8	D8S / R	4500



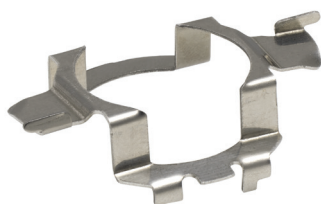
BRAND NEW PRODUCT

THE SUPERCHARGED DIRECT FIT PLUS



Entering the market right along side the Direct Fit is the brand new, high output, Direct Fit Plus. This range offers increased light output while still maintaining an even and stable beam pattern.

The premium fan cooling means these bulbs will not only last, but out-perform anything else on the market for this bulb size.

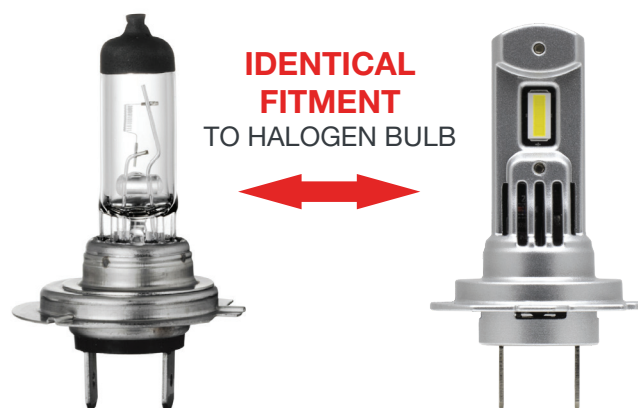


Due to the new collar design and smaller bulb size, both the standard Direct Fit and Direct Fit Plus H7 bulbs are now compatible with most unique H7 retaining / clip systems and headlights.



HALOGEN REPLACEMENT 12V ONLY UP TO 2800 LUMENS PER BULB*

Part No.	Base	Lumens Per Bulb*
999004DFP	H4 / H19	2200
999005DFP	HB3 / H10	2800
999006DFP	HB4	2800
999007DFP	H7 / H18	2200
999011DFP	H8 / H9 / H11 / H16	2800



DIRECT FIT & DIRECT FIT PLUS SHARED PRODUCT FEATURES

- 5700K WHITE LIGHT
- IP65 WATERPROOF
- SUITABLE FOR BOTH REFLECTOR & PROJECTOR HEADLIGHTS
- 2 YEAR LIMITED WARRANTY
- 2 HEADLIGHT BULBS PER KIT
- **NOT APPROVED FOR ADR, ECE OR DOT**



INVISION lighting technology

For further information about the Direct Fit update and the launch of the Direct Fit Plus range, please contact the Invision Sales office or your local sales representative.

Email: enquiries@invisionsales.com
Phone: +613 9336 2066